



WESTERN® WIDE-OUT™ & WIDE-OUT™ XL
RAZORBACK RETROFIT KIT™

INSTALLATION INSTRUCTIONS



READ THIS DOCUMENT BEFORE INSTALLATION OR USE



PRODUCT REGISTRATION BY THE END USER IS REQUIRED FOR WARRANTY ACTIVATION



TABLE OF CONTENTS

Limited Warranty Liability Statement 3

Warranty Information 4

Safety Precautions & Warnings 5

Razorback Retrofit A-Frame Kit Components 6

Razorback Retrofit A-Frame Parts List..... 7

Installation Instructions..... 8



Arctic Snow and Ice Products® is in no way endorsed by or associated with Douglas Dynamics or Western Products. The Arctic RazorBack Retrofit Kit™ is an aftermarket retrofit kit designed to work with the WESTERN® WIDE-OUT™ XL hardware. The Arctic Razorback Retrofit Kit™ is not endorsed by or associated with Douglas Dynamics or Western Products.



LIMITED WARRANTY LIABILITY STATEMENT

Working with machinery and heavy equipment is inherently dangerous with significant risk of personal injury or even death. When a customer uses machinery and heavy equipment, the customer accepts the risk inherent in that use.

The Razor Back Retrofit Kit are aftermarket parts; they are not genuine original equipment manufacturer (“OEM”) parts. The use of the Razor Back Retrofit Kit may impact the performance characteristics of or cause damage to the other systems of the equipment or vehicle. Except as described in this disclaimer, any such impact or damage is the sole responsibility of the customer and is not covered by this disclaimer.

It is the customer’s sole responsibility to inspect and verify that the dimensions, specifications, and performance of the Razor Back Retrofit Kit and its parts and components are appropriate for the customer’s use before any actual installation and/or use of the Razor Back Retrofit Kit. It is the customer’s responsibility to inspect the Razor Back Retrofit Kit before installation for evidence of damage or defect. Improper installation can lead to personal injury or death, or property damage. Installation of the Razor Back Retrofit Kit should only be performed by qualified mechanics who are certified, authorized or otherwise expressly qualified to work on the vehicle and other equipment to be used with the Razor Back Retrofit Kit to service or maintain those vehicles and other equipment of their respective manufacturers. The customer is solely and completely responsible for determining whether its vehicle and equipment may be safely used with the Razor Back Retrofit Kit and that the vehicle and equipment are appropriate for this Razor Back Retrofit Kit and its parts and components. It is the customer’s sole responsibility to ensure that the Razor Back Retrofit Kit and its parts and components are properly installed on their vehicle, including any modifications deemed necessary by the customer for the proper performance of the Razor Back Retrofit Kit.

Arctic Snow and Ice Control Products, LLC disclaims all liability for any special, direct, incidental or consequential damages, or any damages whatsoever, including, without limitation, the loss of life or limb, or damages due to bodily or personal injury, which may arise or result from the installation or use of the Razor Back Retrofit Kit.

ANY DAMAGE RESULTING FROM A CUSTOMER’S INSTALLATION OR USE OF THE RAZOR BACK RETROFIT KIT AND ARCTIC SNOW AND ICE CONTROL PRODUCTS, LLC’S OTHER PRODUCTS AND PARTS IS NOT COVERED BY THIS LIMITED WARRANTY AND IS THE SOLE RESPONSIBILITY OF THE CUSTOMER. ONCE INSTALLED, THE ENTIRE RISK ARISING FROM OR OTHERWISE RELATED TO THE RAZOR BACK RETROFIT KIT OR OTHER PRODUCTS AND PARTS AND THEIR USE IS ASSUMED FULLY AND SOLELY BY THE CUSTOMER.

TO THE FULLEST EXTENT ALLOWED BY THE APPLICABLE STATE AND FEDERAL LAW, ARCTIC SNOW AND ICE CONTROL PRODUCTS, LLC DISCLAIMS THE IMPLIED WARRANTIES OF MERCHANTABILITY AND OF FITNESS FOR A PARTICULAR PURPOSE, EVEN IF A PARTICULAR PURPOSE IS MENTIONED HEREIN.

Arctic Snow and Ice Control Products, LLC expressly disclaims all liability for direct, indirect, special, incidental or consequential damages, including but not limited to, damage or loss of property or equipment, loss of profits or revenue, cost of purchase or replacement of goods, or claims of customers of the purchaser that result from the use of its Razor Back Retrofit Kit, products and parts. In no event shall the liability of Arctic Snow and Ice Control Products, LLC, whether in tort, contract or otherwise, exceed the cost of the Razor Back Retrofit Kit or its part or component. However, the customer may have additional legal rights, which vary from state to state.



Arctic Snow and Ice Products® is in no way endorsed by or associated with Douglas Dynamics or Western Products. The Arctic RazorBack Retrofit Kit™ is an aftermarket retrofit kit designed to work with the WESTERN® WIDE-OUT™ XL hardware. The Arctic Razorback Retrofit Kit™ is not endorsed by or associated with Douglas Dynamics or Western Products.



ARCTIC'S LIMITED 2 YEAR WARRANTY

What is Covered

This warranty covers defects in welds and workmanship, except as set forth below, from the date of purchase.

Who is Covered

The original purchaser from an authorized dealer.

What You Must Do For Warranty Service

During this period, the user is responsible for informing the Dealer/Distributor of any problem(s) within 10 days of the initial occurrence. The Dealer/Distributor must then notify the manufacturer by phone or e-mail.

Failure to fully complete the warranty registration form, with proof of purchase, within 30 days upon receipt of product will void warranty.

What is Not Covered

This warranty does not cover:

1. Failure resulting from abuse
2. Improper service
3. Misuse
4. Negligence
5. Accidental impact
6. Improper operation
7. Any design modifications
8. Any use of 3rd party wear parts
9. Wear parts (shoes, hardware, cutting edges, polyblocks)
10. Corrosion
11. Injury / Death
12. Loss of revenue or profit



To be covered under Arctic's Limited 2 Year Warranty, it is **mandatory** that you register your Arctic RazorBack Retrofit Kit.

DO NOT FORGET TO REGISTER YOUR RAZORBACK RETROFIT KIT™.

Register at:
arcticsnowproducts.com/warranty



LIMITED 2 YEAR WARRANTY POLICY

Manufacturer warrants the RazorBack Retrofit Kit™ to be free of defects of material and workmanship for a period of two (2) years from the date of delivery by the customer. During this period, the user is responsible for informing the Dealer/Distributor of any problem(s) within 10 days of the problem(s). The Dealer/Distributor must then notify the manufacturer by phone or e-mail. (Failure to fully complete the warranty registration form, with proof of purchase, within 30 days upon receiving a new RazorBack Retrofit Kit™ will void warranty.)

The manufacturer will not warranty any wear parts such as wear shoes, poly mounting blocks, torsion springs, hardware and cutting edges. Warranty excludes failure resulting from abusive, improper service, misuse, negligence, accidental impact, improper operation, any design modifications and/or

the use of 3rd party wear parts, corrosion, injury and/or death, and loss of revenue or profit. The manufacturer will void all warranties specific or implied.

All claims must be discussed with an authorized representative of the manufacturer prior to any repairs, or warranty will be void. Recommended repairs and costs are to be discussed with and agreed upon in advance by manufacturer's representative. Repair or labor (at an agreed rate) will be performed by a manufacturer's specified dealer, and at a repair shop designated by the manufacturer. The repair or replaced product shall be guaranteed for the applicable warranty's remaining period. All shipping costs associated with any repairs are the customer's responsibility.




Arctic Snow and Ice Products® is in no way endorsed by or associated with Douglas Dynamics or Western Products. The Arctic RazorBack Retrofit Kit™ is an aftermarket retrofit kit designed to work with the WESTERN® WIDE-OUT™ XL hardware. The Arctic Razorback Retrofit Kit™ is not endorsed by or associated with Douglas Dynamics or Western Products.




SAFETY PRECAUTIONS & WARNINGS


Safety decals must not be removed. If damaged, they must be replaced.



To avoid serious injury or death, do not exceed vehicle GVWR or GAWR. This includes blade and ballast. Vehicle handling could be negatively affected from overloading.



Read Owner's Manual before installing, operating, or servicing snowplow.



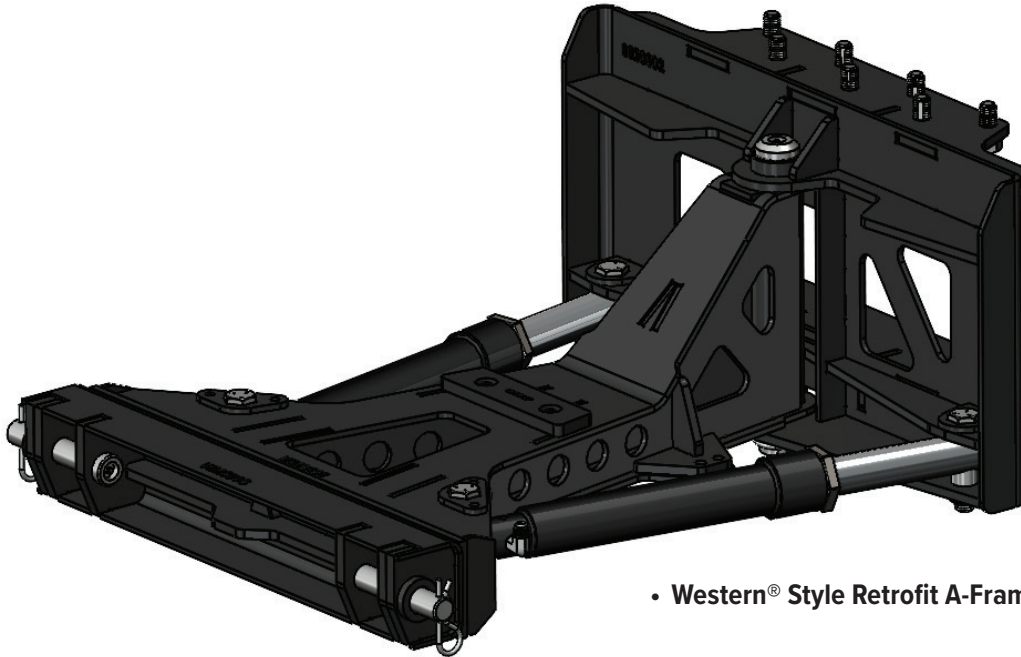
To avoid serious injury or death, lower blade when vehicle is parked. Blade could drop unexpectedly, crushing or trapping limbs.



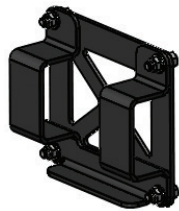
Arctic Snow and Ice Products® is in no way endorsed by or associated with Douglas Dynamics or Western Products. The Arctic RazorBack Retrofit Kit™ is an aftermarket retrofit kit designed to work with the WESTERN® WIDE-OUT™ XL hardware. The Arctic Razorback Retrofit Kit™ is not endorsed by or associated with Douglas Dynamics or Western Products.



RAZORBACK RETROFIT A-FRAME KIT COMPONENTS



• Western® Style Retrofit A-Frame



• Bump-stop Kit with Hardware



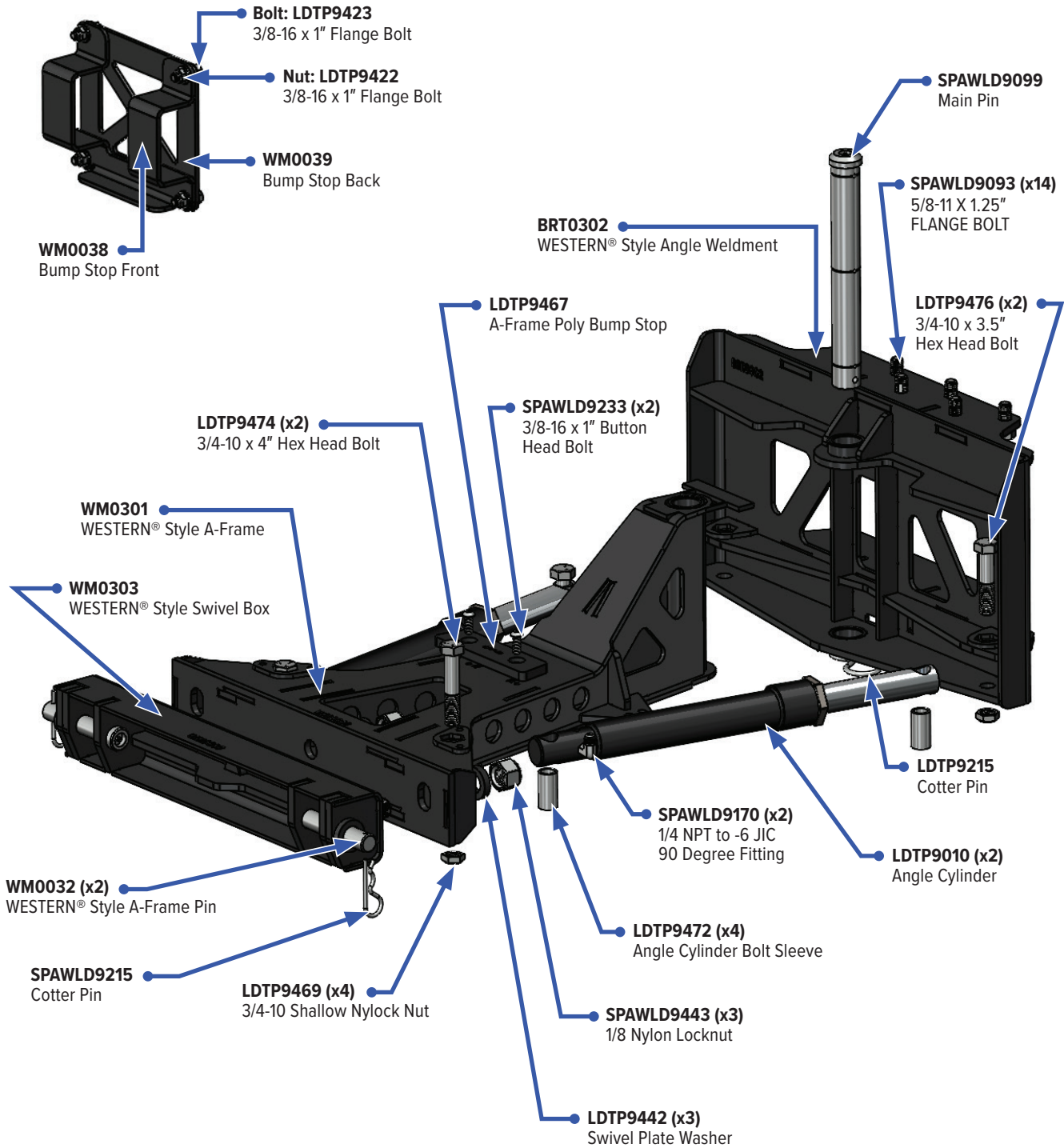
• 1/4 NPT to -6 JIC Fittings x2



Arctic Snow and Ice Products® is in no way endorsed by or associated with Douglas Dynamics or Western Products. The Arctic RazorBack Retrofit Kit™ is an aftermarket retrofit kit designed to work with the WESTERN® WIDE-OUT™ XL hardware. The Arctic Razorback Retrofit Kit™ is not endorsed by or associated with Douglas Dynamics or Western Products.



RAZORBACK RETROFIT A-FRAME PARTS LIST



Arctic Snow and Ice Products® is in no way endorsed by or associated with Douglas Dynamics or Western Products. The Arctic RazorBack Retrofit Kit™ is an aftermarket retrofit kit designed to work with the WESTERN® WIDE-OUT™ XL hardware. The Arctic Razorback Retrofit Kit™ is not endorsed by or associated with Douglas Dynamics or Western Products.



INSTALLING THE RAZORBACK RETROFIT KIT™

ⓘ Before you start the installation process:

If you are using the RazorBack Retrofit Kit™ with an existing plow, start on this page. If you are using a new Western® WIDE-OUT™ XL big box unit, skip to step 9. Follow the OE setup directions for setting truck mount height to ensure the plow's A-Frame will be level to ground

STEP 1

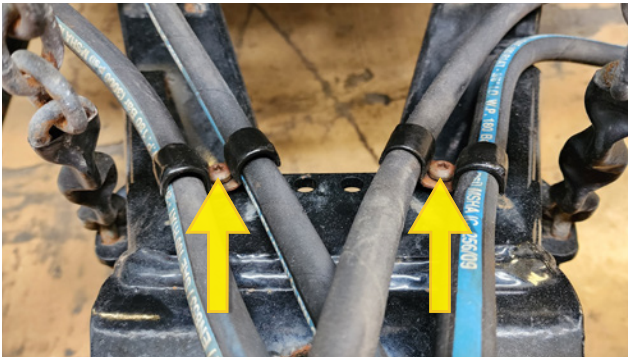
Set plow down on ground and set vehicle parking brake. Locate wing cylinder hydraulic lines pictured below. They are on the back center of the plow moldboard.

ⓘ Make note that the lines are labeled left to right: "A & B — C & D." This will be relevant to the installation of the retrofit kit later on.



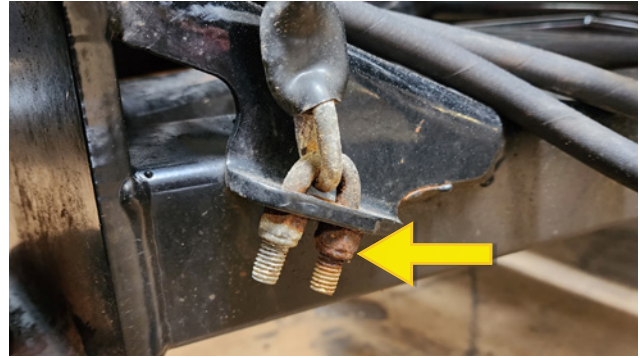
STEP 2

Locate the hose clamps on the top of the plow's A-Frame. Remove clamps to free hoses and pull hoses toward the lift rack – push them out of the way and clear from pinching.



STEP 3

Loosen and remove driver side lift chain on A-Frame.



STEP 4

Loosen and remove driver side angle cylinder hose.



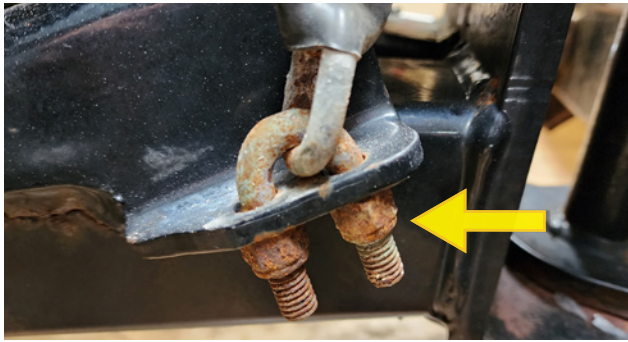
Arctic Snow and Ice Products® is in no way endorsed by or associated with Douglas Dynamics or Western Products. The Arctic RazorBack Retrofit Kit™ is an aftermarket retrofit kit designed to work with the WESTERN® WIDE-OUT™ XL hardware. The Arctic Razorback Retrofit Kit™ is not endorsed by or associated with Douglas Dynamics or Western Products.



INSTALLING THE RAZORBACK RETROFIT KIT™

STEP 5

Loosen and remove passenger side lift chain from A-Frame.



STEP 6

Loosen and remove passenger side angle cylinder hose.



STEP 7

Support plow A-Frame at rear center point to take weight off pins. Make sure the vehicle is in park and the parking brake is set. Ensure the jack is making full contact with rear bar.

POV under A-Frame looking towards truck rear bumper.

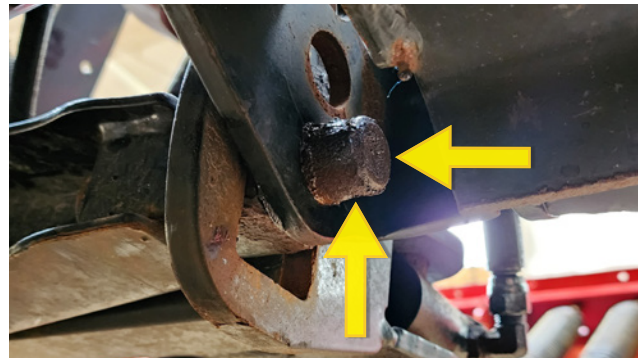
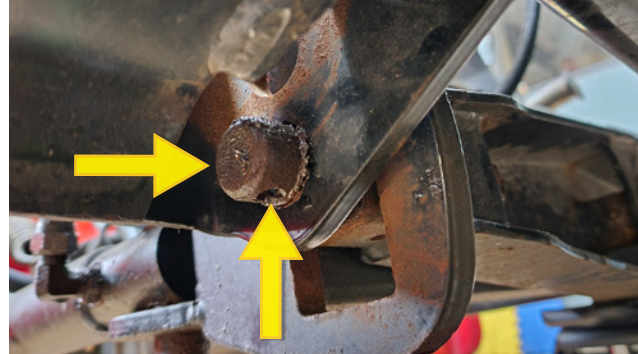


STEP 8

Once the jack is in the correct location detailed in “Step 7”, remove cotter pins and remove A-Frame pins pictured below. Driver and passenger sides.



Pictures show retaining pin already removed. You may need a hammer and punch to remove any seized pins.



Arctic Snow and Ice Products® is in no way endorsed by or associated with Douglas Dynamics or Western Products. The Arctic RazorBack Retrofit Kit™ is an aftermarket retrofit kit designed to work with the WESTERN® WIDE-OUT™ XL hardware. The Arctic Razorback Retrofit Kit™ is not endorsed by or associated with Douglas Dynamics or Western Products.



INSTALLING THE RAZORBACK RETROFIT KIT™

STEP 9

The Western® plow and A-Frame parts are no longer needed. Ensure steps 1-9 have been followed entirely. The Western® WIDE-OUT rack is now ready for the Arctic RazorBack Retrofit Kit™ to be installed.

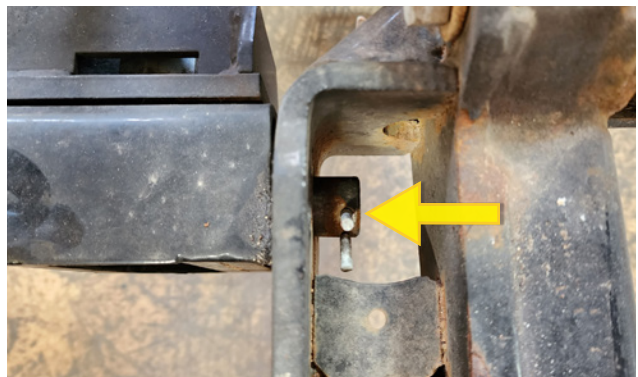
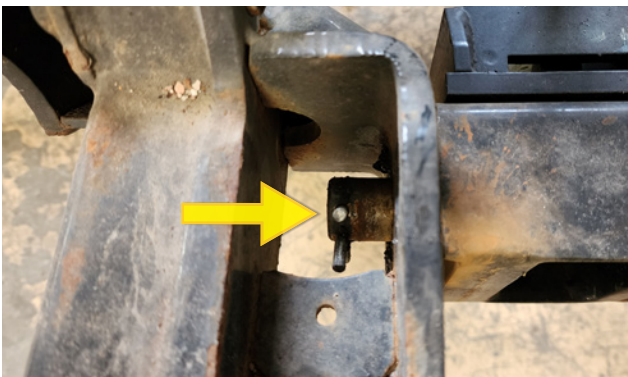


STEP 10

Align the Arctic RazorBack Retrofit Kit™ A-Frame with OE rack mounting holes. Selecting the set of holes that will have the plow's A-Frame level to the ground. Insert pins, provided by Arctic, into the holes on OE rack that will leave the A-Frame level to the ground when the RazorBack is mounted to the truck and in the lowered position. The cutting edges should be touching the ground. Driver side pictured on left and passenger side pictured on right.



Secure both pins with cotter pins: Driver & passenger sides pictured below.



Arctic Snow and Ice Products® is in no way endorsed by or associated with Douglas Dynamics or Western Products. The Arctic RazorBack Retrofit Kit™ is an aftermarket retrofit kit designed to work with the WESTERN® WIDE-OUT™ XL hardware. The Arctic Razorback Retrofit Kit™ is not endorsed by or associated with Douglas Dynamics or Western Products.



INSTALLING THE RAZORBACK RETROFIT KIT™

STEP 11

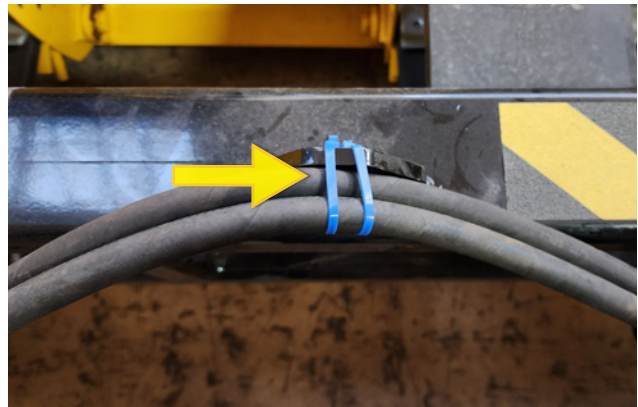
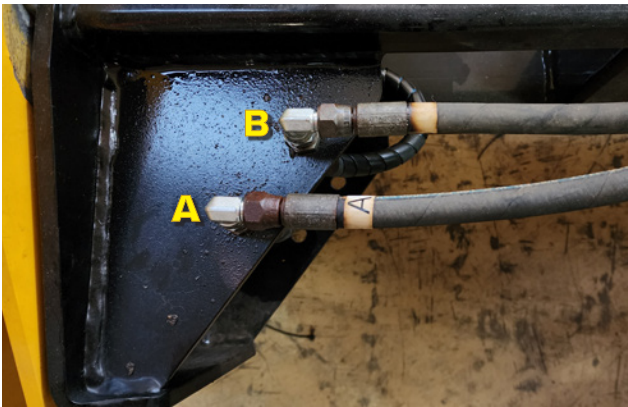
Attach driver and passenger angle cylinder hydraulic lines to their respective side. No thread tape needed.



STEP 12

Attach driver side wing hydraulic lines which are labeled "A" & "B" to ports A & B on Razorback driver side pictured below. No thread tape needed.

Secure lines with provided zip ties to hook point on driver side of frame.



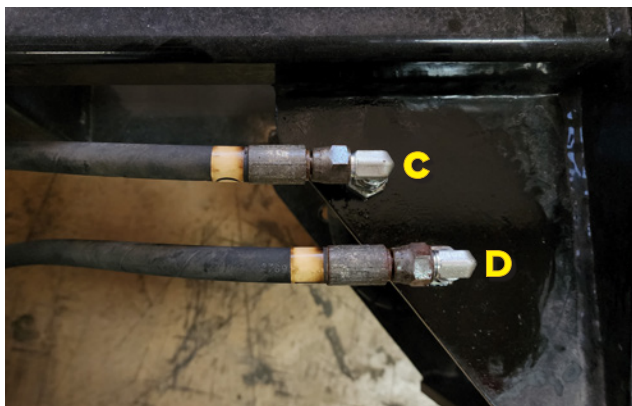
Arctic Snow and Ice Products® is in no way endorsed by or associated with Douglas Dynamics or Western Products. The Arctic RazorBack Retrofit Kit™ is an aftermarket retrofit kit designed to work with the WESTERN® WIDE-OUT™ XL hardware. The Arctic Razorback Retrofit Kit™ is not endorsed by or associated with Douglas Dynamics or Western Products.



INSTALLING THE RAZORBACK RETROFIT KIT™

STEP 13

Attach passenger side wing hydraulic lines which are labeled “C” & “D” to ports C & D ports on Razorback passenger side pictured below. No thread tape needed.



Secure lines with provided zip ties to hook point on passenger side of frame.



STEP 14

Check fluid level for pump and replace lost fluid to proper operating level as necessary.

STEP 15

Bump Stop Installation

The bump stop is only needed when the A-frame is installed in the lowest hole, usually when installed on a taller truck. The bump stop wraps around the cross tube on the plow rack, as shown in the picture below.



Arctic Snow and Ice Products® is in no way endorsed by or associated with Douglas Dynamics or Western Products. The Arctic RazorBack Retrofit Kit™ is an aftermarket retrofit kit designed to work with the WESTERN® WIDE-OUT™ XL hardware. The Arctic Razorback Retrofit Kit™ is not endorsed by or associated with Douglas Dynamics or Western Products.



INSTALLING THE RAZORBACK RETROFIT KIT™

STEP 16

Go through steps 1-14 again to ensure everything has been done per the instructions before operating unit.

STEP 17

Be sure to clear the area of personnel or objects that will be in the movement path of plow before using unit. Power up unit and run to inspect for possible leaks - inspecting the unit with the plow on the ground. Remedy any leaks as needed. There is going to be a lot of slop or slack (undesired movement/actions of the plow) as air is moved out of the system through use. Use caution when working the air out of the system.



Note for slow lifting or lift issues after Razorback Retrofit installation. Due to uncommon inconsistencies we have experienced with the pressure relief valve for the hydraulic pump motor it may become necessary to adjust it back within factory specifications. Please see OEM owner's manual for further details for potential adjustments.

STEP 18

Check fluid level once again. Fill if needed.



Arctic Snow and Ice Products® is in no way endorsed by or associated with Douglas Dynamics or Western Products. The Arctic RazorBack Retrofit Kit™ is an aftermarket retrofit kit designed to work with the WESTERN® WIDE-OUT™ XL hardware. The Arctic Razorback Retrofit Kit™ is not endorsed by or associated with Douglas Dynamics or Western Products.



INNOVATING AN INDUSTRY™



Scan the code to view
this document and other
support materials online.



ARCTIC SNOW AND ICE PRODUCTS, 101 N. EUCLID AVENUE, BRADLEY, IL 60915